

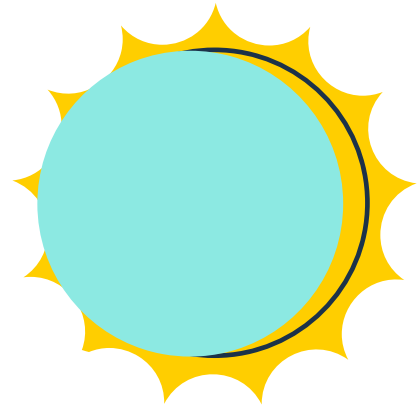
# Eclipse Viewing Guide



## What is an Eclipse?

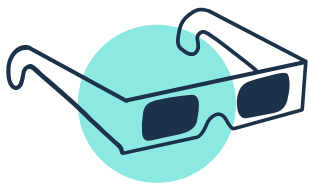
An eclipse occurs when one celestial body partially or completely obscures another from our view. The most commonly viewed eclipses involve the Sun, Moon, and Earth.

- **Solar Eclipse:** A solar eclipse happens when the Moon comes between the Sun and Earth, casting a shadow on Earth. During a total eclipse, the Moon completely blocks the Sun's light, creating a brief period of darkness. In a partial eclipse, the Moon only covers part of the Sun.
- **Lunar Eclipse:** A lunar eclipse occurs when the Earth comes between the Sun and Moon, and the Moon passes into Earth's shadow.



## Safe Eclipse Viewing

Looking directly at the Sun, even during an eclipse, can permanently damage your eyes. Here's how to view an eclipse safely:



### Safe Viewing Methods

- **Solar Eclipse Glasses:** These specially designed glasses have filters that block harmful solar radiation. Look for glasses certified to meet the ISO 12312-2:2015 international safety standard.
- **Handheld Solar Viewer:** Similar to eclipse glasses, these viewers have solar filters and project a safe image of the Sun onto a small screen.

### Important Safety Tips



**Never** look directly at the Sun with your naked eyes, even for a moment. This is true during all phases of a solar eclipse except totality (when the Moon completely covers the Sun).



**Never** use ordinary sunglasses, even very dark ones, to view the Sun. They do not block enough solar radiation.

# Eclipse Viewing Guide

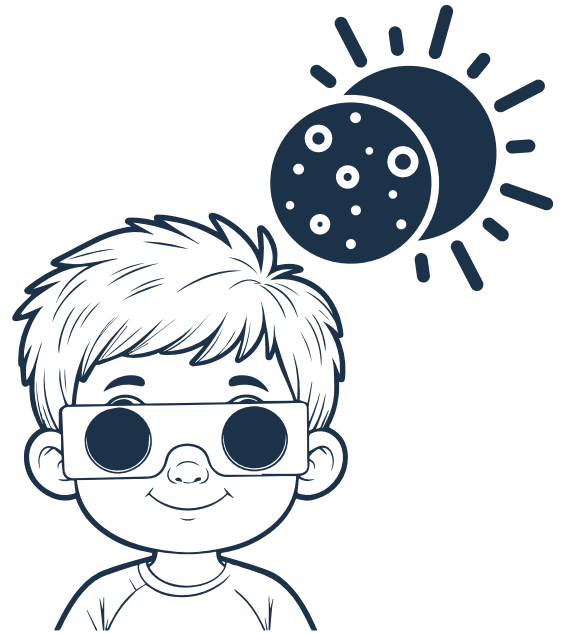


**Inspect your solar filter carefully before use.** If it's damaged (scratched, cracked, etc.), throw it away.

Always supervise children using solar filters.



Only remove your solar filter after completely turning away from the Sun.



## Alternative Viewing Methods (for Partial Eclipses):

- **Pinhole Projection:** This indirect method creates a safe image of the eclipsed Sun on the ground. You can find instructions for making a pinhole projector online.

**Remember:** Totality, the brief period of darkness during a total solar eclipse, is the only safe time to look directly at the Sun without a filter.